

# Understanding the role of the ocean and sea ice small scale features in the Arctic

C. Talandier<sup>1</sup> & C. Lique<sup>1</sup>

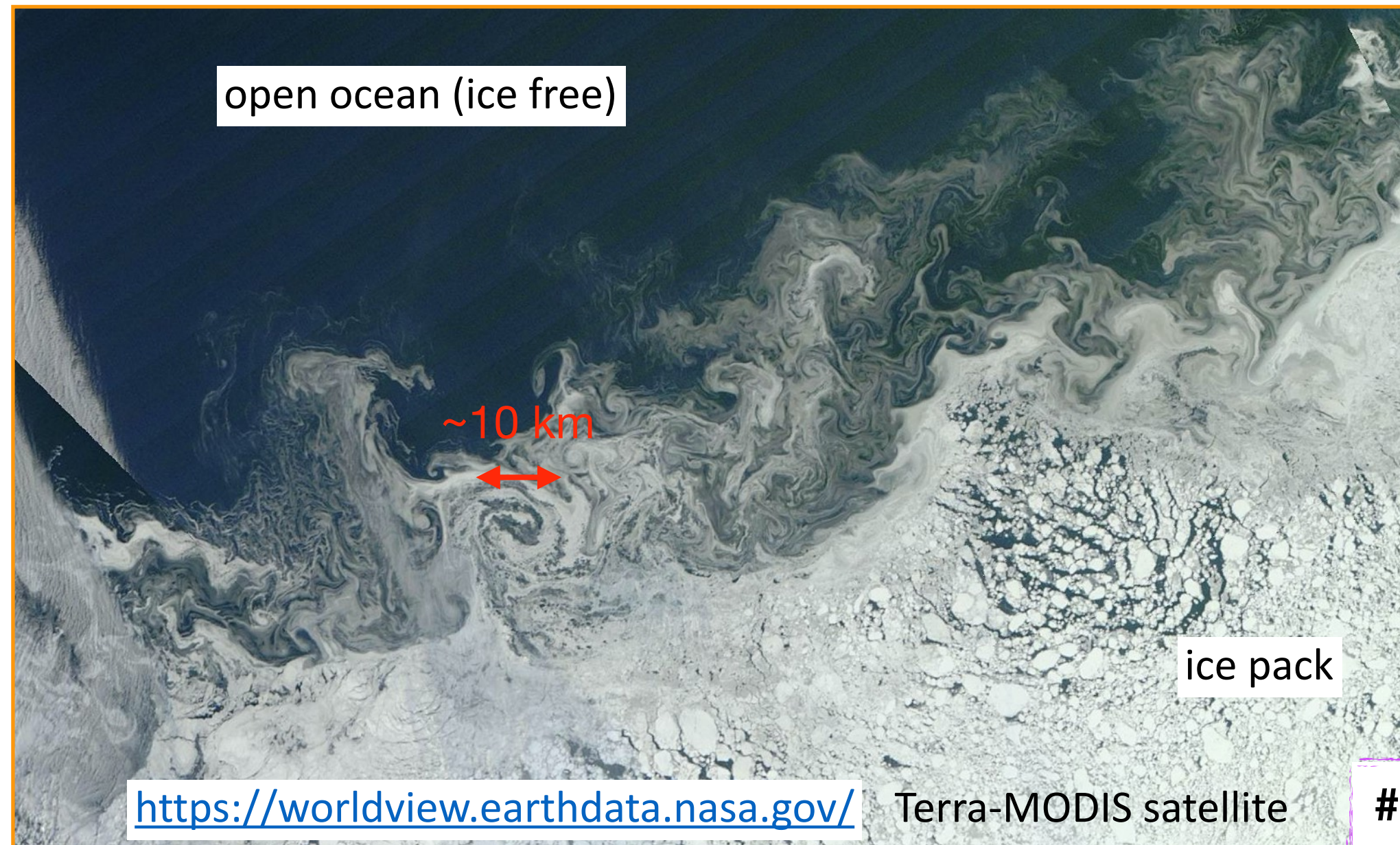
<sup>1</sup> University of Brest, CNRS, IRD, Ifremer.

Laboratoire d'Océanographie Physique et Spatiale (LOPS), IUEM, Brest, FRANCE

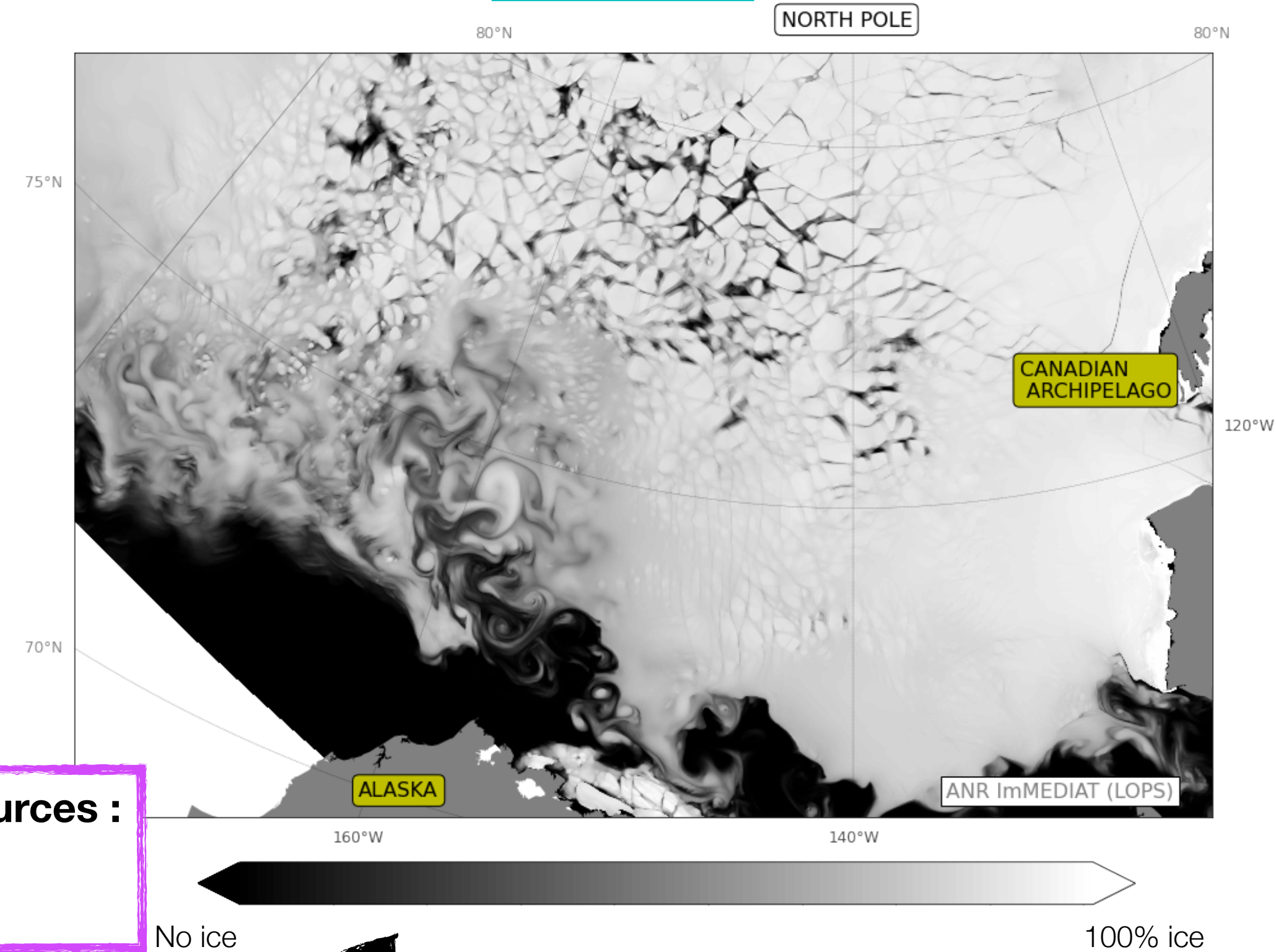


## Observation

Beaufort Gyre in the Arctic



## Simulation



# PRACE computing resources :  
35 000 000 CPU hours  
> 17 000 cores

