



**PARTNERSHIP
FOR ADVANCED COMPUTING
IN EUROPE**

The calls, the Peer-Review process,
how to apply?

a PRACE PPT presentation
Feb 10, 2014



Your lecturers and trainers for the next 4 days

- Lecturers
 - Dr. Guy Tel Zur
 - Jussi Enkovaara
 - Dr. Alan O’Cais
 - Oren Tropp
- Trainers
 - Mordechai Butrashvily
 - Jonathan Tal
 - Yossi Baruch



Which are the HPC resources available through PRACE?



2013: PRACE is providing nearly 15 Pflop/s...

MareNostrum at BSC



JUQUEEN BlueGene/Q at GCS partner FZJ (Forschungszentrum Jülich)



<http://www.prace-ri.eu/PRACE-Resources>



CURIE: GENCI partner CEA (Commissariat Energie Atomique).

FERMI BlueGene/Q at CINECA



SuperMUC at GCS partner LRZ (Leibniz-Rechenzentrum)



HERMIT at GCS partner HLRS (High Performance Computing Center Stuttgart).



How can researchers access the HPC resources available via PRACE?



2 types of resource allocations

1. Preparatory Access :

- permanently opens with regular quarterly cut-off dates (March-June-September-Dec)
- Intended to prepare proposals for Project Access
 - For testing, developing improving and optimizing codes with or without support
 - Not for production runs
- 3 types of categories:
 - testing scalability: Type A, allocation for 2 months
 - Code development or optimisation:
 - Type B, allocation for 6 months
 - Type C, allocation for 6 months, including support
- fixed amount of resources for awarded proposals from 50 to 250k CPU hours, depending on the system



Technical review only

- Evaluation process lasts for 6 working weeks
 - Eligibility check + applicants corrections
 - Technical review
 - Evaluation check and BoD decision
 - Information on awarded proposals and letters sent to applicants
 - Awarded applicant contacted by technical team to arrange setting up an account
- Start date of awarded projects approx. 45 days after the cut-off date



New process to access PA resources

- Too many low/no consumption
 - >> after the awards decision, process to access resources is two-fold:
 - Awardees are asked to confirm their availability and readiness to use the awarded resources during the stated period of time
 - Access is provided after reception of positive reply



2. Regular Access

- 12 months awarded period
- resources awarded on duly justify requests, above 5Mio CPU hours
- Intended for senior researchers and research groups including multi-national research groups
- Technical and Scientific peer review



Best science supported on the highest level through a fair Peer Review Process

- Regular calls for proposals publish on PRACE web site :
2 calls a year
February – September

Call opens in **February** > Access is provided starting **September**

Call opens in **September** > Access is provided starting **March**

<http://www.prace-ri.eu/Call-Announcements>



Time schedule for regular calls: About 21 working weeks from call opening to publication of results

- Regular calls are open at least for *6 weeks*
- Evaluation process lasts about *15 weeks*
 - Eligibility check + applicants reply
 - Technical evaluation - Designation of experts
 - Scientific evaluation
 - 3 experts by proposals
 - Experts chosen by AC
 - 3 weeks for evaluating a proposal
 - Applicants Right to Reply, 1week
 - Prioritisation panel, BoD approval, communication to users, creation of accounts



How to apply?

Via the PPR (PRACE Peer Review) On-line application tool @:

<https://prace-peer-review.cines.fr/>

Two Steps

1. Fill-in the application form on-line
2. Include the Mandatory PDF document
 - Research project description
 - Management of resources and staff
 - Numerical methods and algorithms planned
 - The need to run on a PRACE Tier-0 system...
 - All necessary information
 - Not respecting the template can lead to rejection

Attention! All collaborators should be identified: only those collaborators identified in the application form will be allowed to access the PRACE resources!



[Front page](#) > Display of proposal 2011050747

Proposal n°2011050747

General information

Type of proposal: Project access

Is this proposal a

Continuation
ID of the previous proposal =

Note: For proposals requesting access as continuation to previous access, it is mandatory to present the final report or a progress report at the time of the closure of the Call. This report will be sent to the Peer Review Team (peer-review@prace-ri.eu), and analysed by the Access Committee to evaluate the status of on-going access. The template document for this report is available on the [PRACE website](#) ("Information for PRACE Awardees"), and it must be carefully respected.

Start date:

Project name:

Research field: //ERC fields only//

Attached document
(mandatory additional questions)

Contact person for all correspondence

Name:

E-mail:

Project leader (personal data and contact)

The employment contract of the project leader with the research organisation must be valid at least 3 months after the end of the allocation period.

See other eligibility criteria on the [Call announcement](#) ([link to the Call announcement](#)).

Gender:

Title:

First name:

ON-LINE FORM

FILL-OUT ALL FIELDS AND BOXES

SUBMISSIONS ARE VALID ONLY IF:

- ALL MANDATORY FIELDS IN **RED** ARE FILLED-IN
- SUBMITTED BEFORE THE DEADLINE

DO NOT WAIT UNTIL THE LAST MINUTE!

SUBMIT YOUR PROPOSAL WHEN READY

UNSUBMIT AND RESUBMIT LATER, IF NECESSARY



IUCC HPC User Forum

Prof. Benjamin Svetitsky bqs@julian.tau.ac.il

Prof. Alexander Gelfgat gelfgat@tau.ac.il

Dr. Avi Cohen cohen.avi8@gmail.com

Dr. Dan Thomas Major Dan-Thomas.Major@biu.ac.il

Prof. Lucio Frydman lucio.frydman@weizmann.ac.il

Prof. Pinchas Alpert pinhas@post.tau.ac.il

Dr. Yehuda Hoffman hoffman@huji.ac.il

Prof. Dan Mordehai danmord@technion.ac.il



Eligibility

- Proposals from researchers in academia are eligible if:
 - the project leader is a senior researcher employed in a research organisation.
 - The employment contract of the project leader is valid at least 3 months after the end of the allocation period.
- Proposals from researchers in industry are eligible if:
 - The company has its head office or substantial R&D activity in Europe.
 - The employment contract of the project leader is valid at least 3 months after the end of the allocation period.
 - Access is devoted solely for open R&D research purposes.
- Proposals asking for resources on a single machine or on multiple machines are allowed.
- Please note that a proposal asking for resources on multiple machines has to justify the need to access several machines. The proposal will be awarded or rejected in its totality (no subpart of the proposal will be awarded).



Terms of Access

- **REPORTING**: providing a final report on the results obtained* is a mandatory condition to access PRACE resources
- No **EXTENSION** : exception possible in time only & only in case of unforeseen technical issues
- **ACKNOWLEDGEMENT**: applicants must **acknowledge PRACE** in all publications that describe results obtained using PRACE resources, using the text specified in the ["Guide for Applicants to Tier-0 Resources"](#) section 4.2.
- **DISSEMINATION**: applicants allow PRACE to publish the final report of the project (please check specific conditions), and should provide some material for additional dissemination activities (slides, pictures, reference of publications with work executed in PRACE systems).



What is the PRACE Peer-review process?

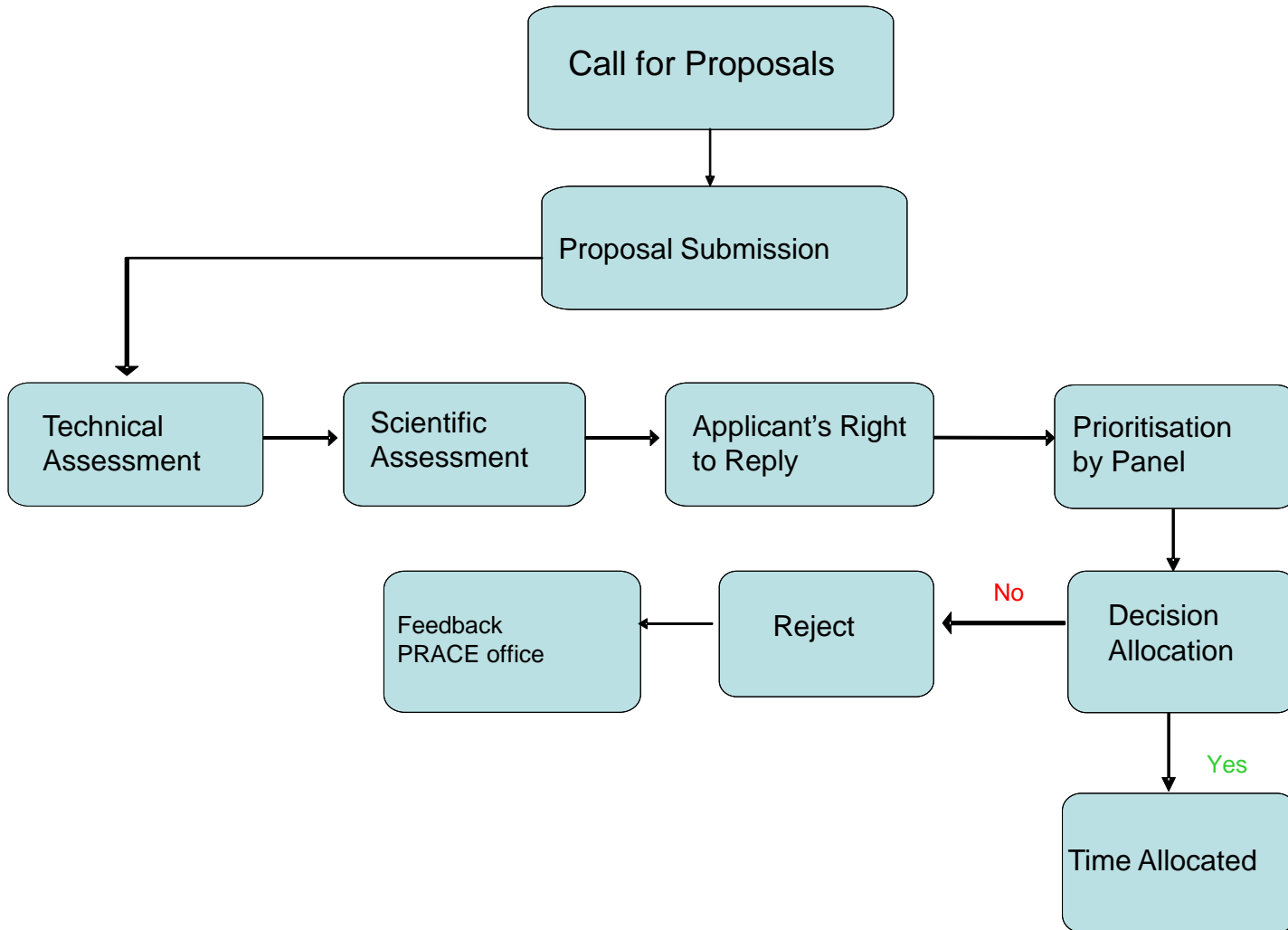


Peer review principles

- Transparency
- Fairness
- No parallel assessment
- Avoiding conflict of interests
- Reviews by non-conflicted experts
- Confidentiality
- Right to reply technical and scientific evaluations
- Right to appeal final decision



Peer Review Process





Technical assessment

- All proposals will undergo a technical assessment. The technical assessment can result in three outcomes:
 - Fully complying with the system
 - Suitable on the system
 - Not adapted to the system



Criteria for technical assessment

- **Justified need** to use a PRACE resource
- **Software availability** on the requested resource
 - The codes necessary for the project must be available on the system requested and/or, in case of codes developed by the applicants and Project and Programme Access proposals sufficiently tested for efficiency, high scalability, and suitability.
 - For Project and Programme Access Proposals proof of successful tests must be submitted together with the proposal;
- **Feasibility** of the requested resource. The requested system must be suitable for the proposed project. The technical assessment may redirect projects to a more appropriate system.
- These criteria should be **fully addressed** in the application.



Scientific Assessment

- Scientific review is performed by internationally recognized experts in the field of research of the proposal
- Maximum one expert selected from the proposed by the applicant
- During the scientific assessment an increase or decrease in the requested resources can be recommended for consideration in resource allocation.
- Technical assessment is available to scientific reviewers



Criteria for scientific assessment

- **Scientific excellence.** Demonstrate scientific excellence and a potential for high European and international impact
- **Novelty and transformative qualities.**
 - Proposals should be novel, develop an important scientific topic of major relevance to European research
 - describe possible transformative aspects, and expected advances
- **Relevance** to the call if a specific scope is stated in the call
- **Methodology**
- **Dissemination**
 - The planned channels and resources for dissemination and knowledge exchange
 - List of recent publications relevant to the proposed project.
- **Management.** Solid management structure in the project
- These criteria should be **fully addressed** in the application.



Resource Allocation

- Access Committee makes a recommendation for resource allocation to the Board of Directors
- Composed of scientists and industry representative
- Analyse
 - Technical and scientific review reports
 - Applicants' response
- Produce
 - A single and unique ranked list for each call
 - Project and Programme proposals are ranked in the same list
 - Industrial and Academia proposals are ranked in the same list
 - Takes into account the advice regarding amounts of resources
 - Possible decision on cut-off threshold for awarding of proposals



FAQ

- What to do in case of continuation or re-submissions?
 - Continuation application must provide an intermediate report (same format as the final report, with intermediate information)
 - No special treatment for resubmission application
- Cuts on requested resources:
 - depending on experts advice & resource allocation recommendation
 - After the prioritization panel due to scientific reasons
- Maximum allocation percentage for industrials applying alone:
not more than 5% of each requested system
- Open calls to all countries in Europe and the world

<http://www.prace-ri.eu/FAQ>



Further reading @

www.prace-ri.eu/How-to-apply

Terms of reference of Open calls @

www.prace-ri.eu/Call-Announcements

**Not able to get the information on the web,
further questions**

peer-review@prace-ri.eu