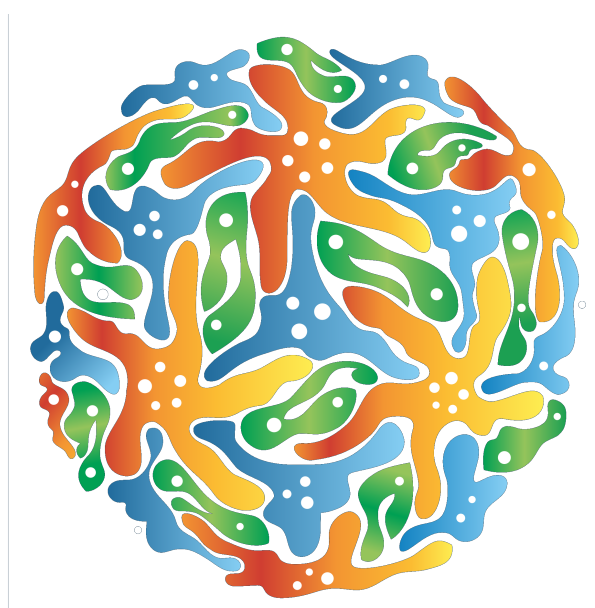


Session Program

Jun 10 - 13, 2019



PRACE/BioExcel Seasonal School 2019, Sweden - HPC for Life Sciences

Lecture on HPC simulations with AMBER

Stockholm, Sweden, V37
Teknikringen 78, KTH Main Campus SE-100 44 STOCKHOLM Sweden (see also google maps link below)

Thu, June 13

9:30 AM

Lecture on HPC simulations with AMBER

Session |

Location: Stockholm, Sweden, V37, Teknikringen 78, KTH Main Campus SE-100 44 STOCKHOLM Sweden (see also [Google map](#), [Prof. David Cheatham](#))

10:30 AM

11:00 AM

Lecture on HPC simulations with AMBER

Session |

Location: Stockholm, Sweden, V37, Teknikringen 78, KTH Main Campus SE-100 44 STOCKHOLM Sweden (see also [Google map](#), [Prof. David Cheatham](#))

12:00 PM